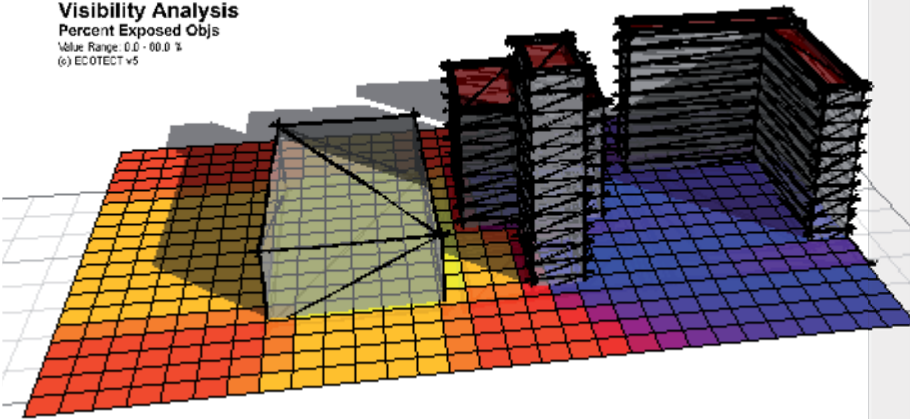


Visibility Analysis
Percent Exposed Objs
Value Range: 0.0 - 100.0 %
(c) ECOTECT v5



VISIBILITY ANALYSIS

Using Ecotect™ you can calculate the visibility of selected objects from specific locations in the model. This type of analysis can be used to determine how much of a proposed development is visible from another building facade.

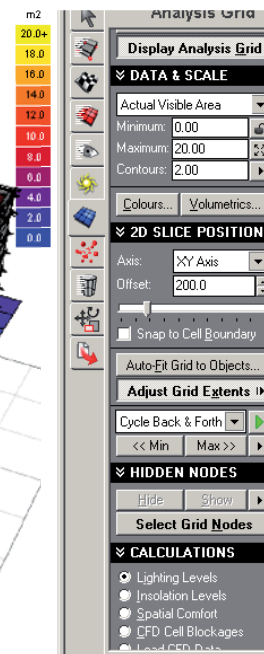
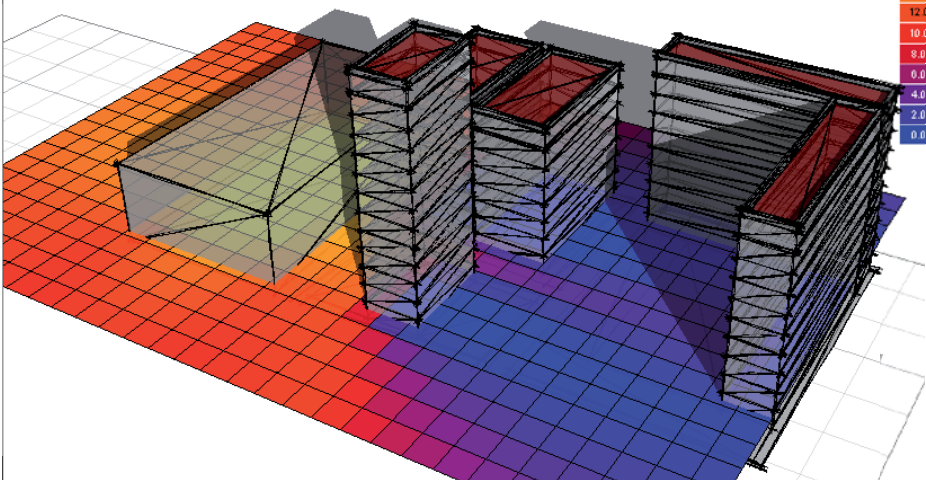
Step-by-step Instructions

Go to the Analysis Grid panel. Under the Grid Settings section, click the **Display Analysis Grid** button. The analysis grid is displayed in the model. The visibility of the proposed development will be calculated over the analysis grid for the facade of this building.

Go to the Select » By Zone... menu command. A dialog box appears listing all the zones in the current model. Select the ExampleSite zone. Click Ok. Or select manually a surface/object you want to analyse, by selecting it in the 3DEditor panel.

Go to the **Calculate** menu and select **Spatial Visibility Analysis**. In the wizard, select **Visibility of Selected Objects**, and then click Next.

Visibility Analysis
Actual Visible Area
Value Range: 0.0 - 20.0 m2
(c) ECOTECT v5



The wizard screen confirms that you have selected objects to use with the Spatial Visibility Analysis. Click **Next**.

To configure how partial visibility of objects will be calculated, click the Suggest a Reasonable Sample Size button. Ecotect™ then automatically sets the Sampling Grid Size. Click **Next**.

Confirm your selected settings on the Summary Page, and then click **OK** to proceed.

Ecotect™ calculates the visibility of the selected objects from the building facade. Results are displayed as square metres of visible area over the analysis grid.

Use the options under the Analysis Grid panel to manipulate the display of the analysis grid. For example, to display contours over the analysis grid, select the Show Contour Lines checkbox.