

Author:

Zurich, Altstetten

Date/Time:

Area XX

**Transect Zone:**

BLOCK		DISSECT	
1. STREET NAME / STREET NAME		2. PUBLIC FRONTAGE	
3. PRIVATE FRONTAGE			
<i>Satellite image of the block area (e.g. Google Maps, orthophoto)</i>		<i>Photo of the public frontage</i>	
		<i>Photo of the private frontage</i>	
		Public Frontage Type <sup>1</sup> (Table 4B)	Private Frontage Type <sup>1</sup> (Table 7)
		Spatial Width [m]	Principal Building Height [m]
		Street Width [m]	Principal Building Stories [#]
		Road Surface <sup>7</sup>	Outbuilding Height [m]
		Speed Limit [km/h]	Outbuilding Stories [#]
		Moving Lanes [#]	Outbuilding Material
			First Floor above Grade [m]
		Parking Lanes [#]	Building Disposition <sup>1</sup> (Table 9)
		Parking Green Type	Lot Width [m]
		Pavement Width [m]	Lot Depth [m]
		Border Stone Type [raised/lowered]	Lot Coverage [%]
Block Dimension [m x m]		Border Stone Radius [m]	Buildout Percentage at Setback [%]
Lot Size [m x m]		Central Dividing Strip [m]	Front Setback [y/n]
Lot Coverage [%]		Sidewalk Width [m]	Side Setback [y/n]
Sealed Area [%]		Planter Type [continuous/ individual/none]	Rear Setback [y/n]
Vegetated Area [%]		Planter Width [m]	Outbuilding Setback [y/n]
Number of Trees [#]		Planting Pattern [unregular/cluster/alley/double alley/none]	Front Garden Type <sup>5</sup>

Number of Shrubs [#]		Tree Distance [m]		Rear Garden Type <sup>5</sup>	
Proportion of native vegetation [0% 30% 70% 100%]		Proportion of native vegetation [0% 30% 70% 100%]		Proportion of native vegetation [0% 30% 70% 100%]	
Approximated Planting Age [years]		Tree Type <sup>4</sup>		Front Encroachment [y/n]	
Wetland/Pond [m <sup>2</sup> ]		Bike Way Width [m]		Side Encroachment [y/n]	
Units per ha (100m x 100m) [#]		Street Furniture Type <sup>3</sup>		Ground Level Function and Use <sup>1</sup> (Table 12)	
Number of parked Cars [#]				Ground Level Construction Material <sup>6</sup>	
Utilisation factor, (e.g. 1.2) "Ausnützungsziffer" [AZ] <sup>2</sup>				Upper Level Function and Use <sup>1</sup> (Table 12)	
Number of Street Furniture [#]				Upper Level Construction Material <sup>6</sup>	

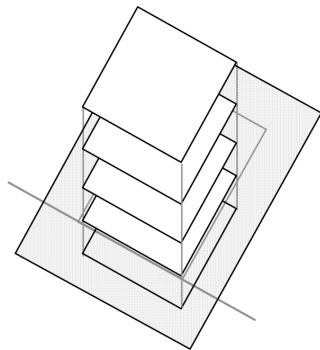
**Appendix**

<sup>1</sup>SmartCode Version 9.2 and manual, Center for Applied Transect Studies (CATS), <http://www.transect.org/docs/3000-BookletSC-pdf.zip>

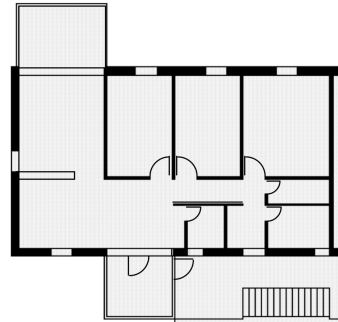
<sup>2</sup>Utilisation factor

„Die Ausnützungsziffer (AZ) ist die Verhältniszahl zwischen der anrechenbaren Bruttogeschossfläche (BGF) der Baute und der anrechenbaren Landfläche (AL). Als anrechenbare Bruttogeschossfläche gilt die Summe aller ober- und unterirdischen Geschossflächen einschliesslich der Mauer- und Wandquerschnitte.“

(<http://www.bussnang.ch/pages/documents/Baureglement.pdf>)



$$AZ = \frac{BGF}{AL} = \frac{\text{[ ]}}{\text{[ ]}}$$



<sup>3</sup> Street Furniture Type: [http://en.wikipedia.org/wiki/Street\\_furniture](http://en.wikipedia.org/wiki/Street_furniture)

<sup>4</sup> Tree Type: [http://en.wikipedia.org/wiki/List\\_of\\_trees](http://en.wikipedia.org/wiki/List_of_trees), [http://de.wikipedia.org/wiki/Liste\\_von\\_Bäumen\\_und\\_Sträuchern\\_in\\_Mitteleuropa](http://de.wikipedia.org/wiki/Liste_von_Bäumen_und_Sträuchern_in_Mitteleuropa)

<sup>5</sup> Garden Type: <http://en.wikipedia.org/wiki/Garden>

<sup>6</sup> Construction Material: [http://en.wikipedia.org/wiki/Construction\\_material](http://en.wikipedia.org/wiki/Construction_material)

<sup>7</sup> Road Surface: [http://en.wikipedia.org/wiki/Road\\_surface](http://en.wikipedia.org/wiki/Road_surface)