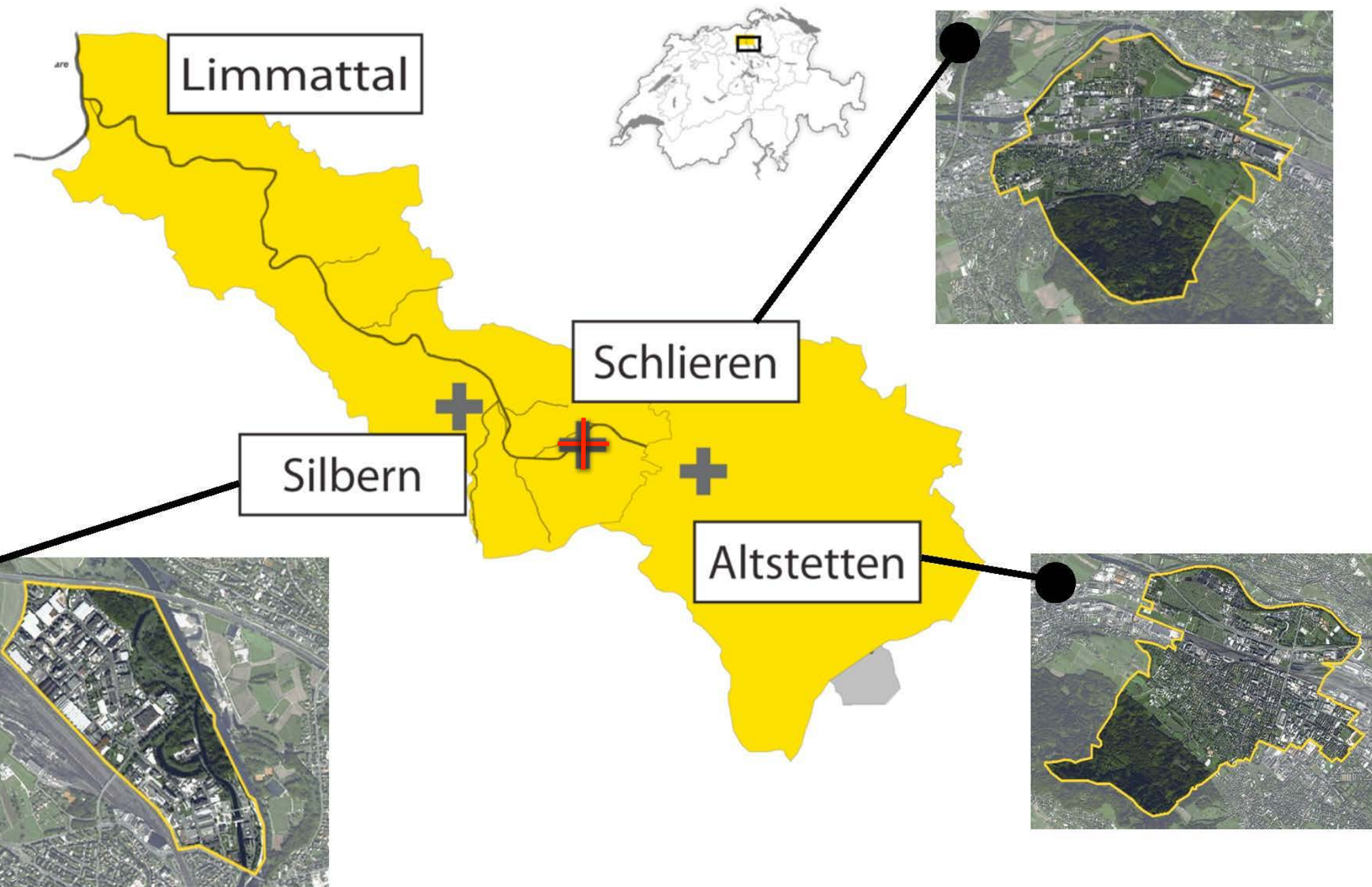


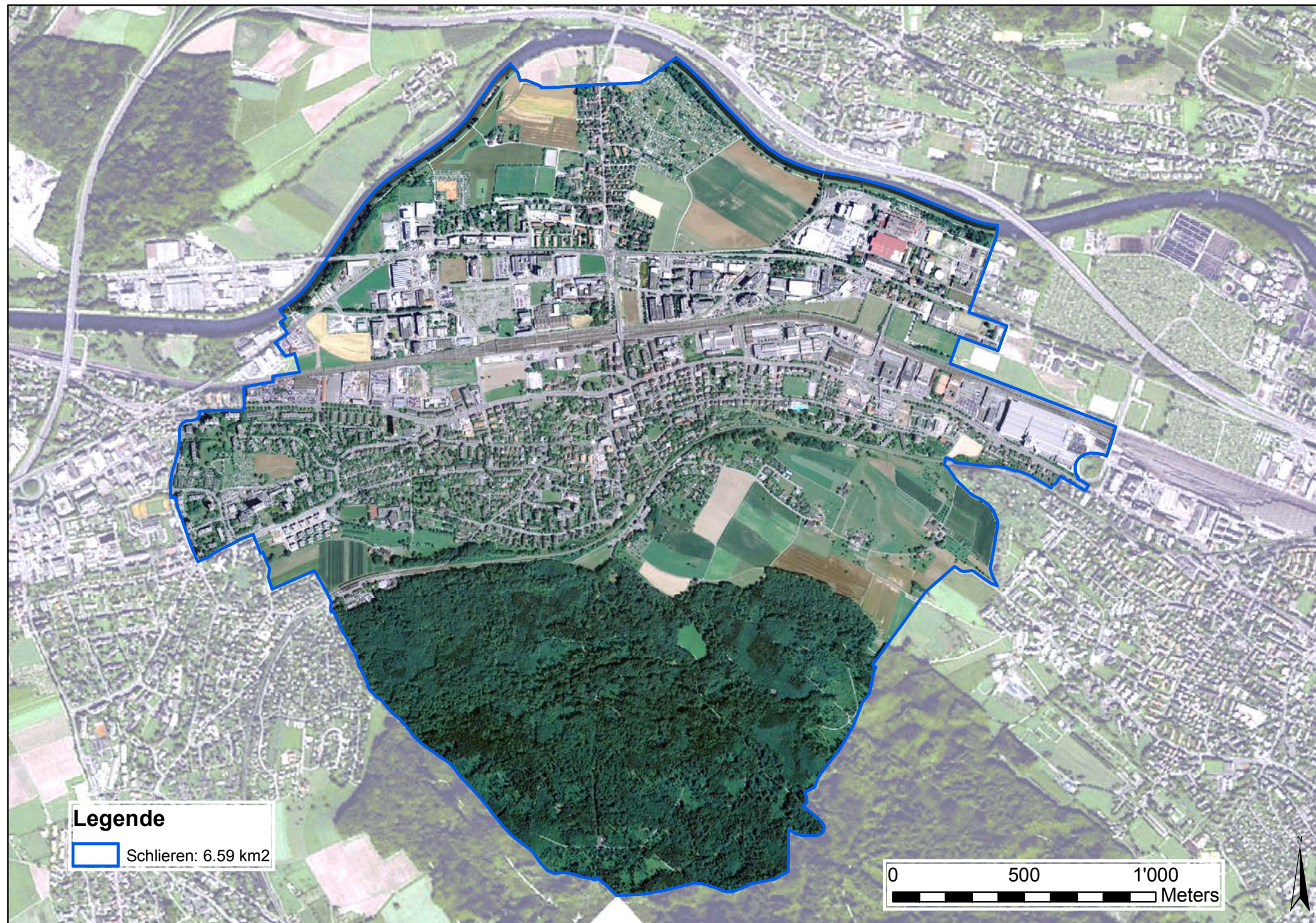
Case-study Schlieren

additional information is available on our website at:

www.ia.arch.ethz.ch/category/teaching/hs2011_workshop/



satellite view



workshop 5



Area 6.6 sq. km

Population 13,860
(as of 2007)

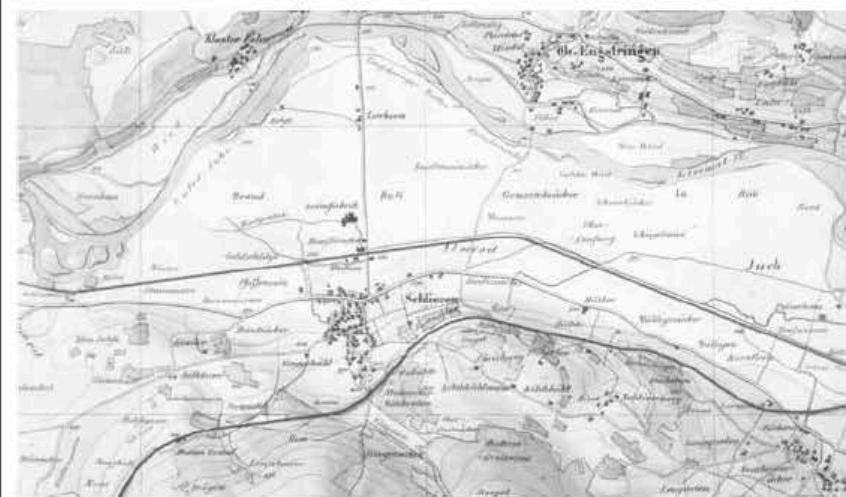
19.5% agricultural
purposes

28.1% forest

50.7% is settled
(buildings, roads)

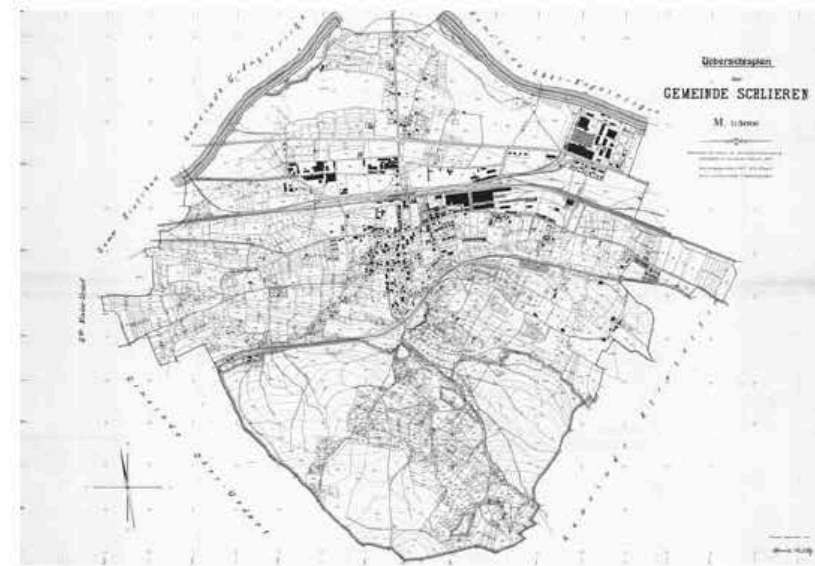
1.7% non-productive
(e.g. river)

historic development



Schlieren 1874

- Längsbeziehung durch Badener-/Zürcherstrasse und Bahnlinie
- Querbeziehung durch Engstringer-/Uitikerstrasse
- Dorf liegt - typisch für das Limmattal - quer zum Tal und orientiert sich am Mühlbach
- Spanisch-Brötlibahn mit Station ausserhalb des Dorfes



Schlieren 1924
(Übersichtsplan)

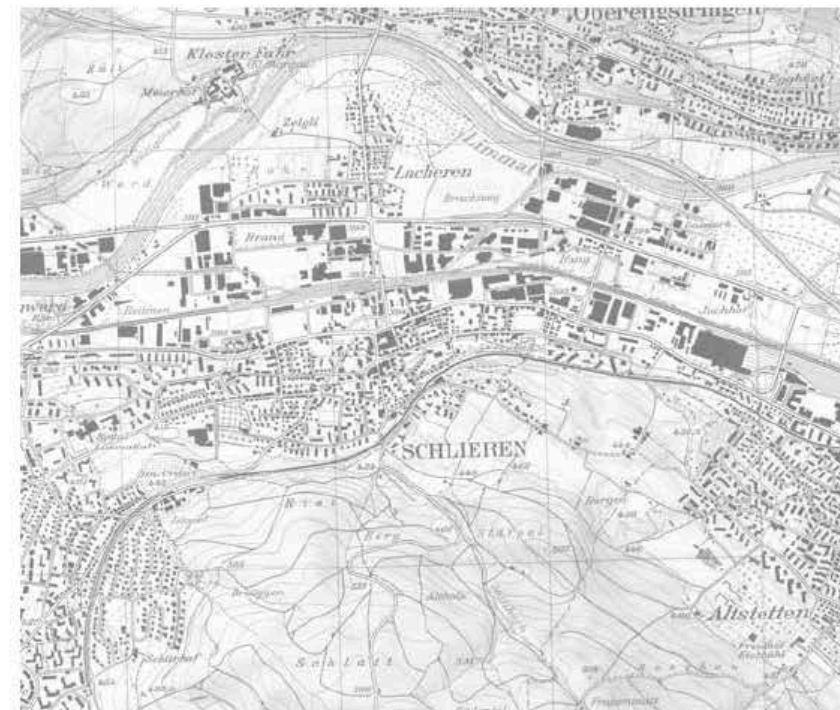
- Beginnende Industrialisierung in der Parallele zur Bahnachse
- Bernstrasse als neue Längsachse
- Bahn wirkt bereits trennend (Bahnübergang)



Schlieren 1960
(Luftbild)

Dreiteilige
Wohnentwicklung:

- Quartier Schulstrasse (Ost)
- Quartier Urdorfstrasse (West)
- Quartier Engstringerstrasse (Nord)
- Noch geringe Industrie- und Gewerbeentwicklung



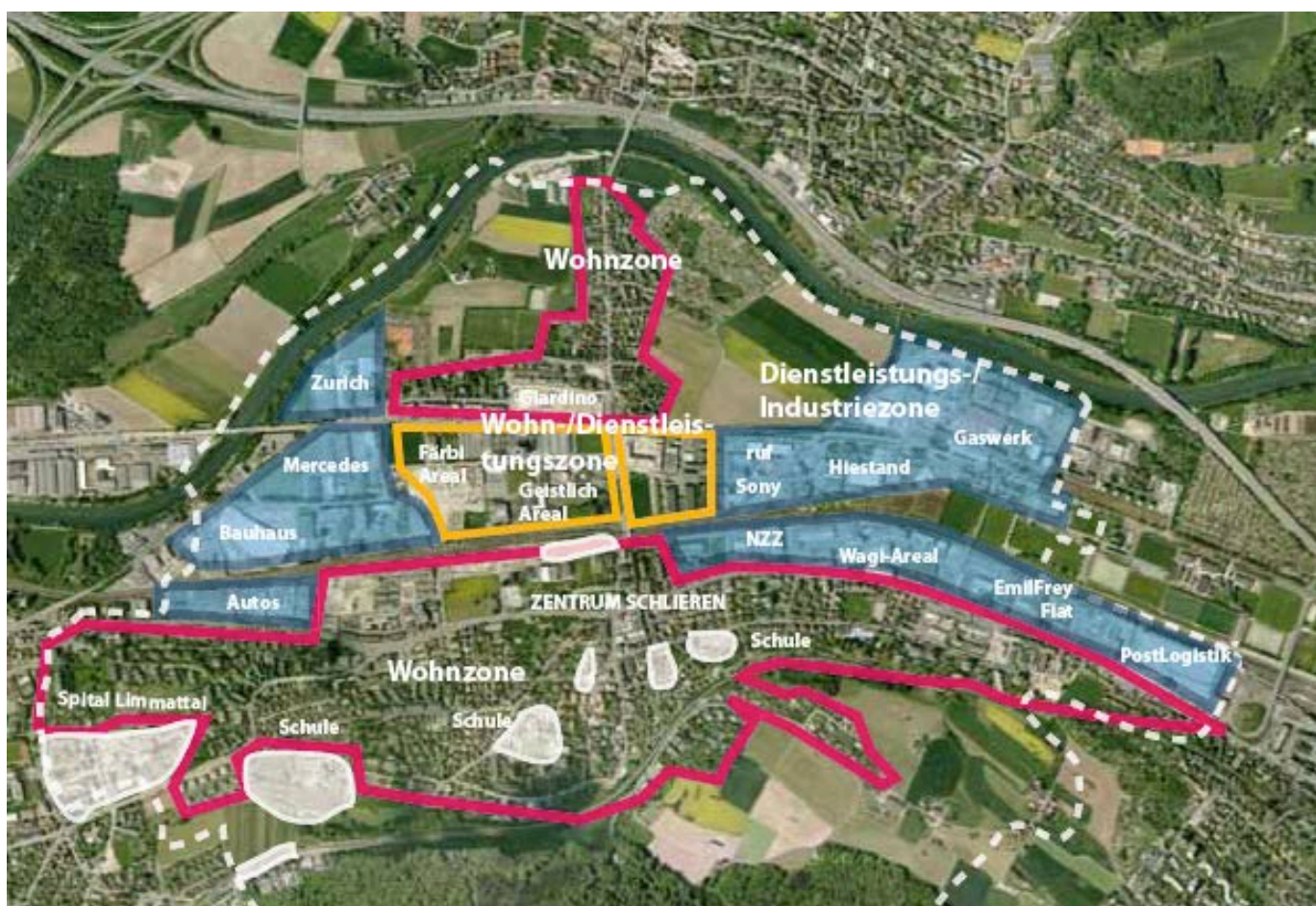
Schlieren 2003
(Landeskarte; Bundesamt für Landestopographie. Reproduziert mit der Bewilligung von swisstopo (JA032203))

- Aufgehen des ursprünglichen Dorfs im Siedlungsband Limmattal
- Industrie und Verkehrsachsen passieren Schlieren in der Längsachse
- Umstrukturierung grosser Gemeindeflächen
- Zwei zusätzliche Querungen der SBB
- Bau der Autobahn nördlich Limmatt

www.schlieren.ch/de/

workshop 5

transport & zoning



workshop 5



historic center

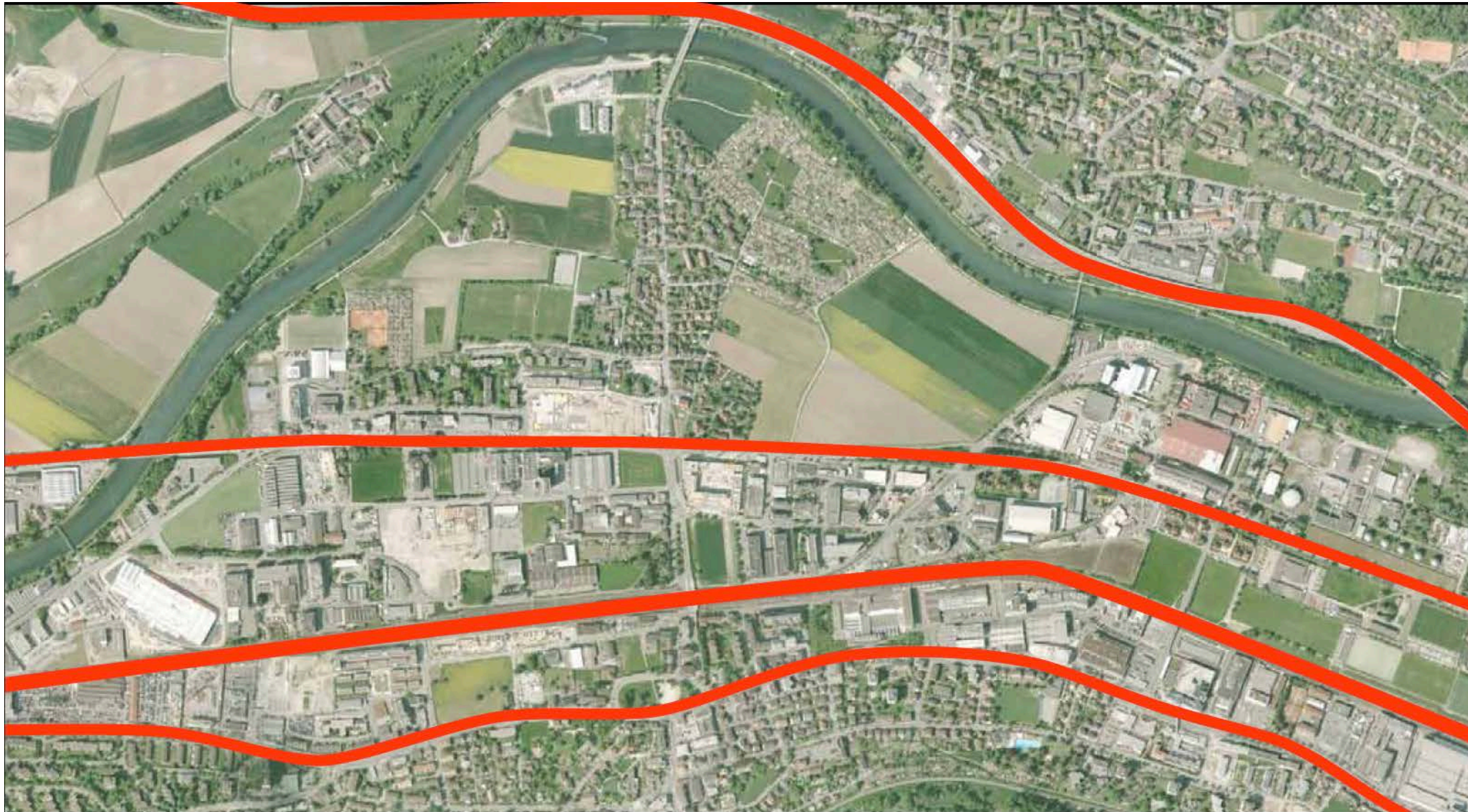
workshop 5

present functions



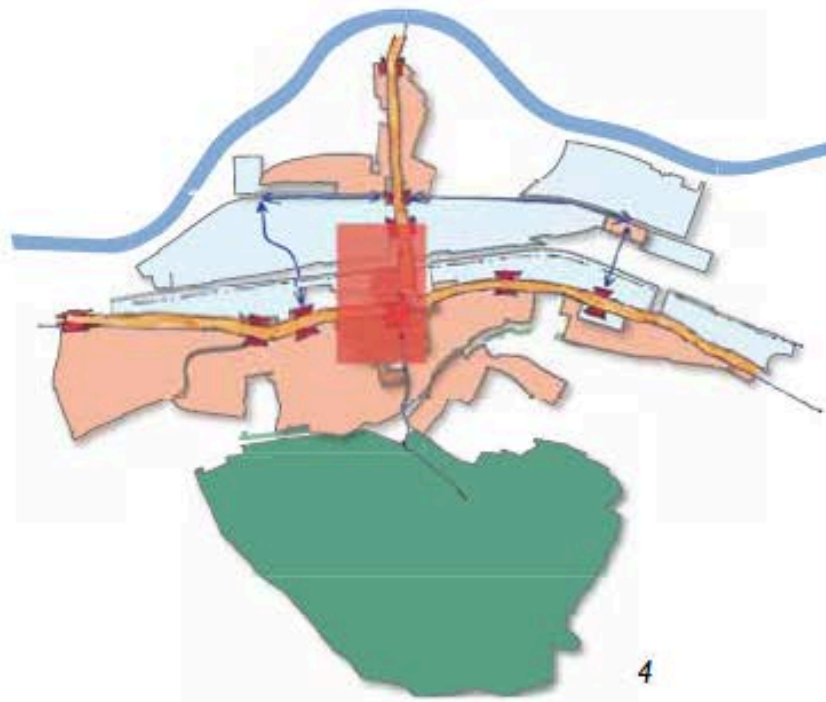
Major problems:

- **Discontinuity of urban fabric** (separation by traffic roads and railroad)
- Allot of traffic
- Low quality of pedestrian space
- Lack of identity

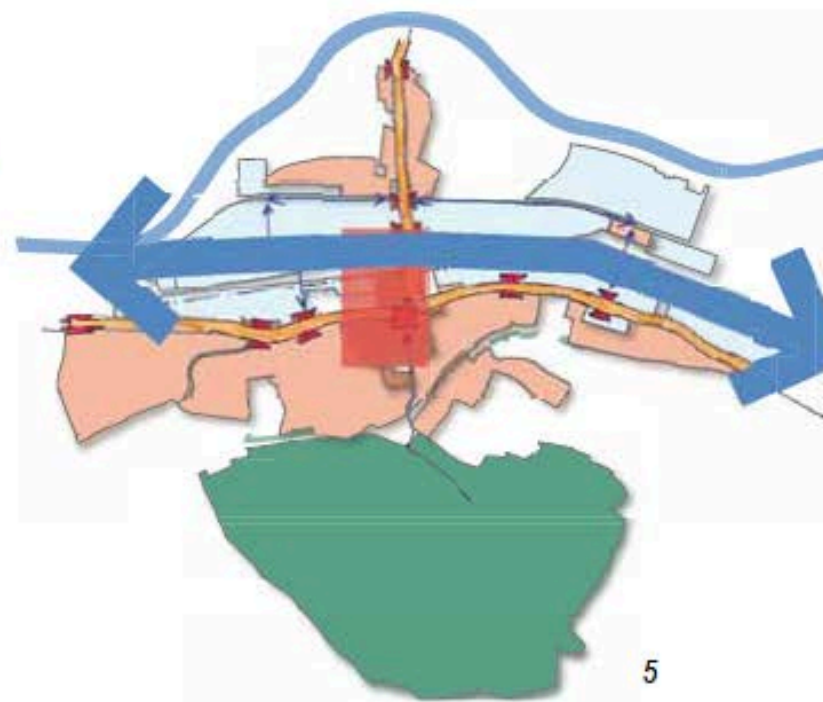


A1, Bernstr, railroad, Badener/Zurcherstr

Zentrumsentwicklung

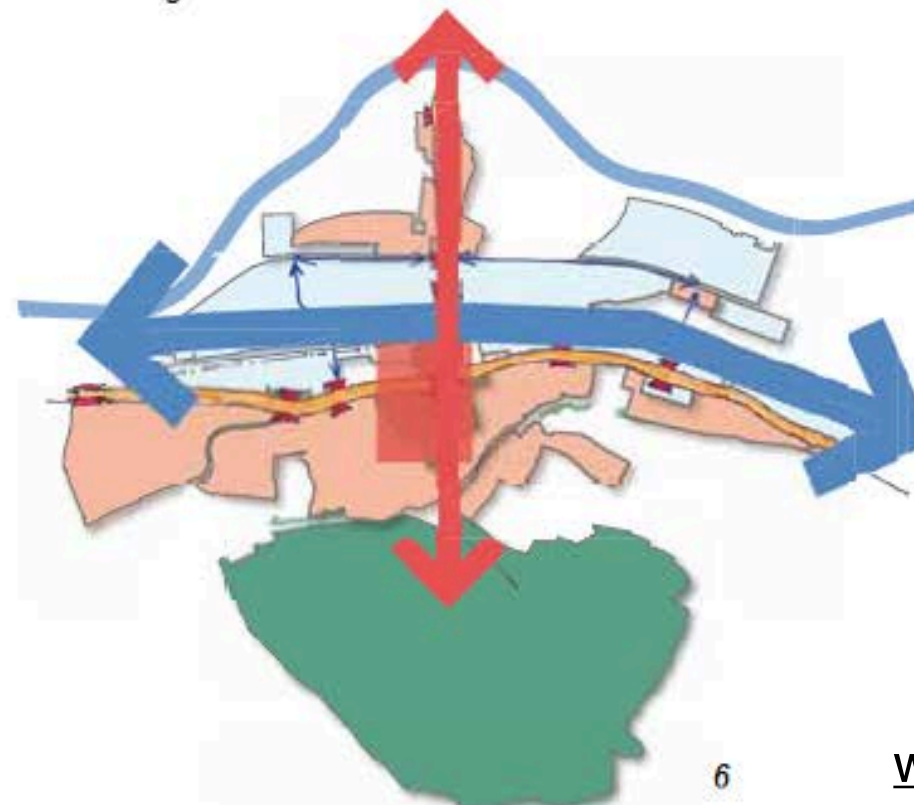


Ausbildung Ost-West-Korridor



separation between
the northern and
southern parts

Ausbildung Nord-Süd Achse



www.schlieren.ch/de/

workshop 5

Major problems:

- Discontinuity of urban fabric (separation by traffic roads and railroad)
- Allot of traffic
- Low quality of pedestrian space
- Lack of identity



workshop 5

Noise



workshop 5



low quality of
pedestrian facilities



workshop 5



waiting time
approx. 90 sec

workshop 5



lack of identity

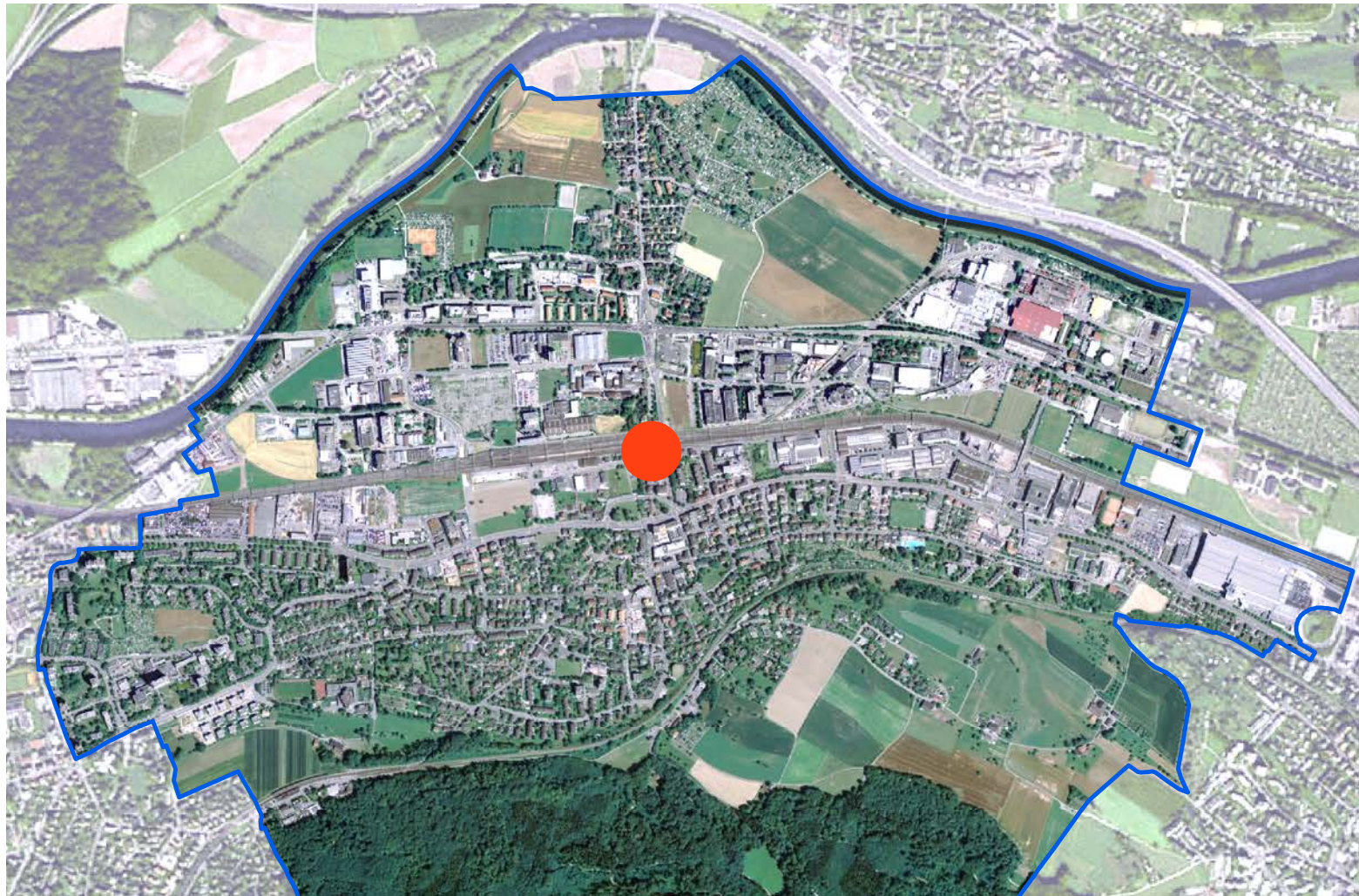


- Relocation of Badenerstr, new roundabout
- Reunion of old farm houses with historic center, creation of a new pedestrian square
- New connections, improvement of old ones between northern and southern parts
- ‘Remarkable roof’ project by locals

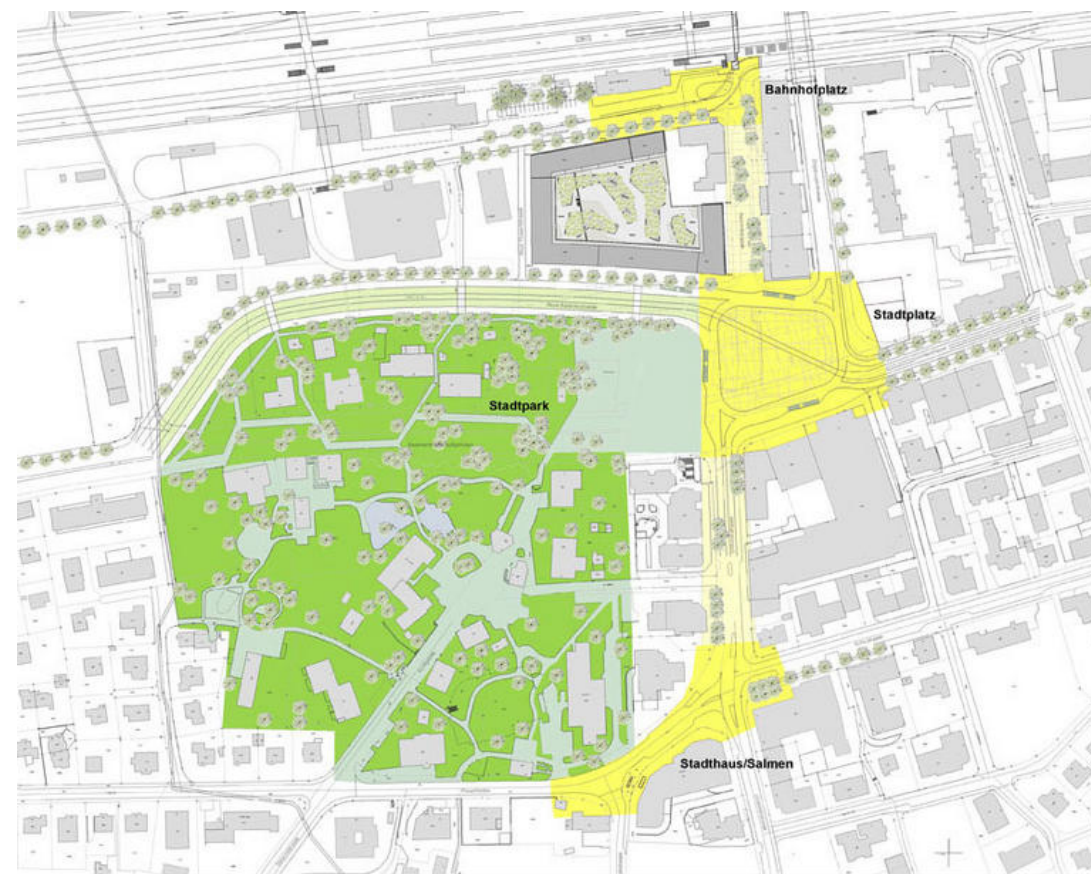
proposed
solutions

workshop 5

Redevelopment of Schlieren Zentrum



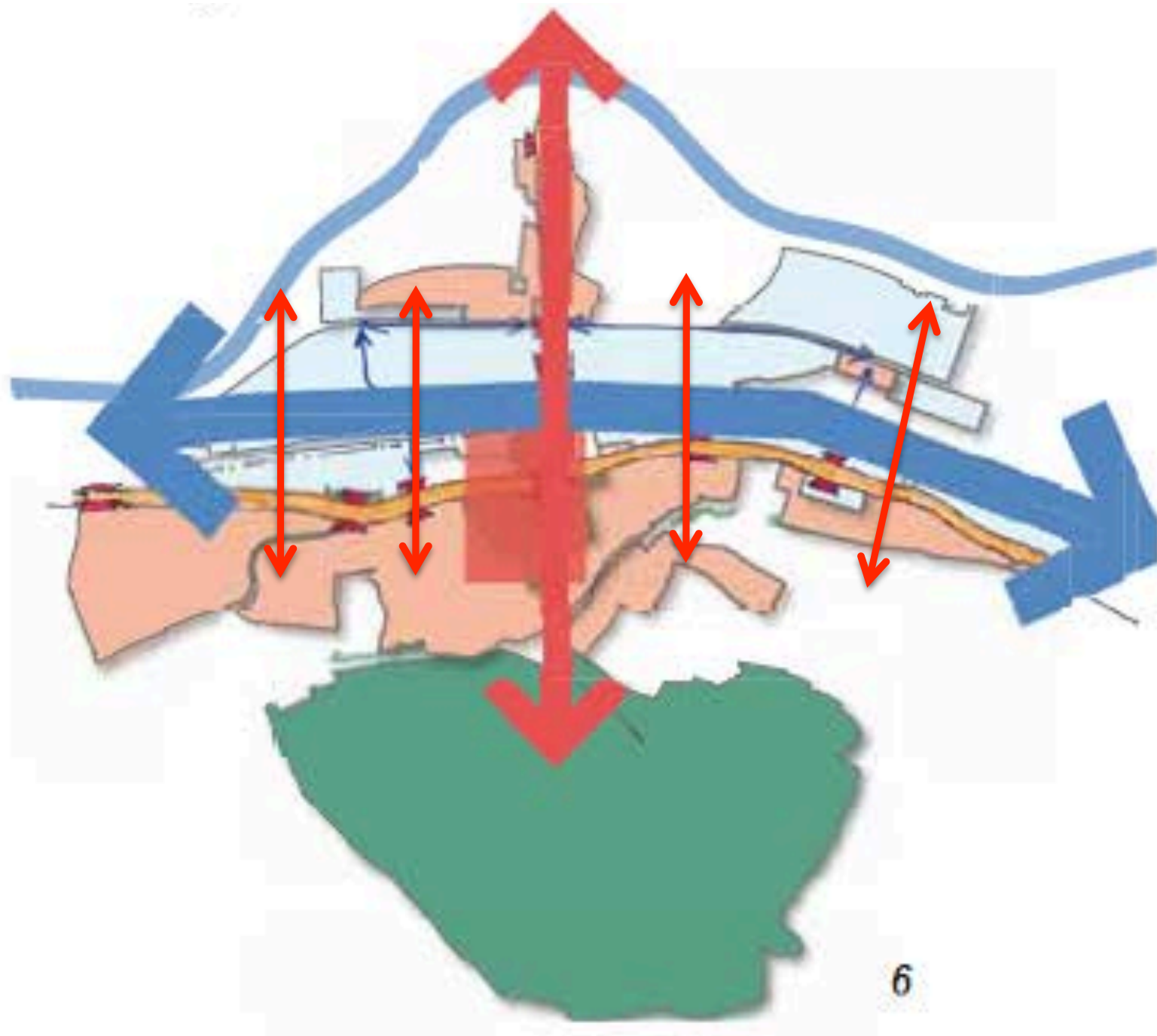
workshop 5



- Relocation of Badenerstr, new roundabout
- Reunion of old farm houses with historic center, creation of a new pedestrian square



www.schlieren.ch/de/



- New connections, improvement of old ones between northern and southern parts

workshop 5



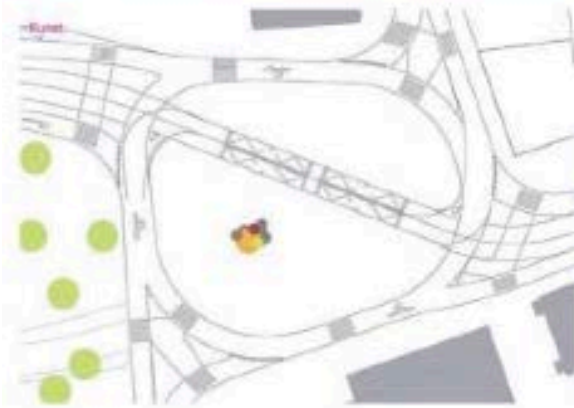
“remarkable roof”
project developed
by locals



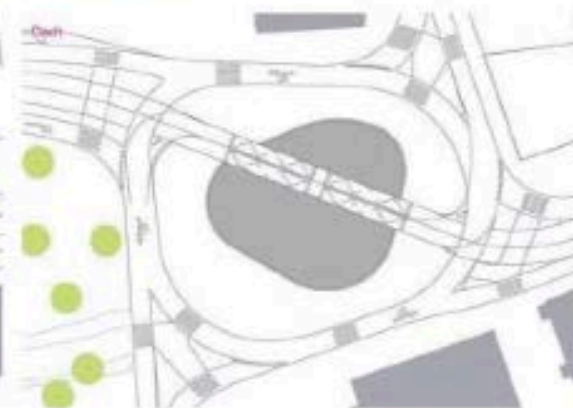
www.schlieren.ch/de/

workshop 5

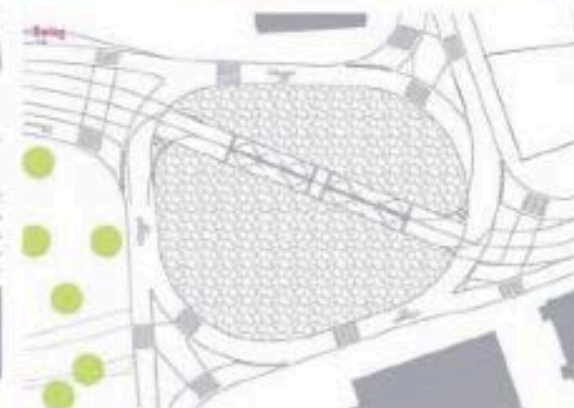
Kunst



Dach

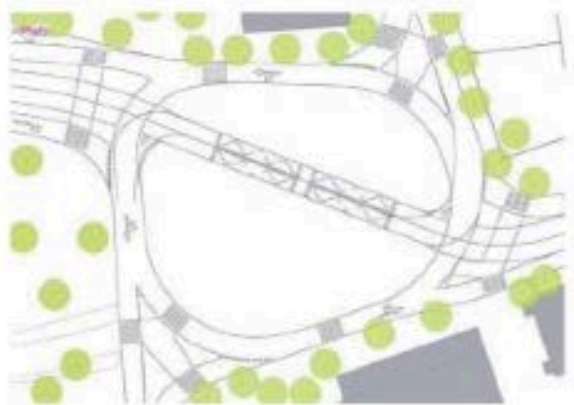


Belag



“remarkable roof”
project developed
by locals

Platz



Baumdach



Baumgruppen



www.schlieren.ch/de/

1. Optimization of the pedestrian network
(improvement of pedestrian connections
between the north. and south. parts)
2. Scenarios for building distribution and
infill of former industrial zones (urban scale)
3. Building bulk optimization (building scale)

project topics